

313 *HQHUDO 3XUSRVH \$PSOLILHU

)HDWXUHV
 " (SR[\ PPHWV 8/ 9 IODPPDELWLW\ UDWLQJ
 " +DORJHQ IUHH DYDLODEOH XSRQ UHTXHVW E
 " ORLWVXUH 6HQVLWLYLW\ /HYHO
 " +LJK VSHHG VZLWFKLQJ

0HFKDQLFDO 'DWD
 " 3DFNDJ-27
 0ROGLQJ FRP SRWQ& PH9 IODPPDELWLW\ UDWLQJ
 5R+6 FRPSOLDQW KDORJHQ IUHH
 " 7HUPLQDQW SODWHG OHDGV VROGHUDEOH S
 - 67' DQG -(6' %
 " 0DUNLQJ \$

v0D[LPXP 5DWZDJV XQOHVV RWKHUZLVH QRWHG

| ,WHP | 6\PERO | 8QLW | &RQGLWLRQV | 9DOXH |
|--|--------|-------|--------------|-------|
| 0LQLPXP &ROOHFWRU (PLWWHU 9ROWDJH | | | 9 & 9P\$ % , | |
| 0LQLPXP &ROOHFWRU %DVH 9ROWDJH &%2 | | 9 | 9 & , X\$(, | |
| 0LQLPXP (PLWWHU %DVH 9ROWDJH | (%2 | | 9 (9 X\$& , | |
| &ROOHFWRU &XUUHQW | & | P\$, | | |
| &ROOHFWRU 'LVVLSDWLRQ | 3& | P: | | |
| 7KHUPDO 5HVLVWDQFH)URP -XQFWLRQ \$7R \$PELHQW | | | | |
| 2SHUDWLRQ -XQFWLRQ 7HPSHUDWXUH M | | - | 7 | WR |
| 6WRUDJH 7HPSHUDWXUH | VWJ | - 7 | | WR |

v(OHFWULFDO & KDZD FWXIDQ MVL FRWKHUZLVH QRWHG

| ,WHP | 6\PERC | 8QLW | &RQGLWLRQV | 0LQ | 7<3 | 0D[|
|--------------------------------------|--------|------|------------------------------------|-----|-----|-----|
| &ROOHFWRU (PLWWHU 9ROWDJH | | | & P\$ % ,9 | , | | |
| &ROOHFWRU %DVH 9ROWDJH &%2 | | | 9 X\$(9 | , | | |
| (PLWWHU %DVH 9ROWDJH (%2 | | | 9 (X\$& 9 | , | | |
| &ROOHFWRU %DVH FXW RII FXUUHQW | | | &% 9, Q \$ | | 9 | |
| (PLWWHU %DVH FXW RII FXUUHQW | | | (% ,9 Q \$ | | 9 | |
| '& &XUUHQW *DLQ | K(| | &, P\$ &9 9 | | | |
| | K(| | &, P\$ &9 9 | | | |
| | K(| | &, P\$ &9 9 | | | |
| | K(| | &, P\$ &9 9 | | | |
| | K(| | &, P\$ &9 9 | | | |
| &ROOHFWRU (PLWWHU 6DWXUDWLRQ 9ROWDJH | | | & P\$ % , P\$ & P\$ % , P\$ | | | |
| %DVH (PLWWHU 6DWXUDWLRQ 9ROWDJH | | | & P\$ % , P\$ & P\$ % , P\$ | | | |
| 7UDQVLWLRQ)UHTXHQF\ | 7 | | & P\$0&9 9 + 0+]] | | | |
| &ROOHFWRU EDVH 2XWSXW &DSDFLWDQFH | | | &% 9SF I 0+]] , | | 9 | |
| (PLWWHU EDVH ,QSXW &DSDFLWDQFH | | | (% &9SF I 0+]] , | | 9 | |
| 1RLVH)LJXUH | | 1) | 9& % 9 & , P\$ 65 . I G %] .+] | | | |
| 'HOD\ 7LPH | | WG | QV | | | |
| 5LVH 7LPH | | WU | QV | | | |
| 6WRUDJH 7LPH | | WV | & P\$ % , % P\$ QV | | | |
|)DOO 7LPH | | WI | QV | | | |

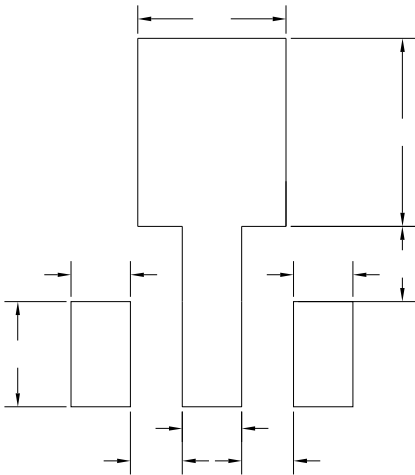
v2UGHULQJ ,QIRUPDWLRQ

| | | | | | | |
|-------------|-------------------|-----------------|--------------------------|---------------------------|------------------------------|----------------|
| 35()5(' 3 1 | 3\$&.,1* &2'(' | 81,7 :(' ,*+7 J | 0,1,080 3\$&.,1*(SFV | ,11(5 %2; 48\$17,7< SF | 287(5 &\$572 48\$17,7< SF | '(/,9(5< 02'(' |
| 3;7 |) | \$SSUR[LPDWH | | | | |

v&KDUDFWHULSMLDFQ

v627 3DFNDJH 2XWOLQH 'LPHQVLRQV

v627 6XJJHVWHG 3DG /D\RXW



81,7 00

'LVFODLPHU

7KH LQIRUPDWLRQ SGRFMDMCHG LQ IRKLVHDIHJHQRK<RQJMLH (OHFWURQLF 7HFKQRO
ULJKW WR PDNH FKDLFHVRZLWKR XWSKRLSILURDQKFRQ/ RGLWSOD\HG KHUHLQ WURGLFSLURQY
RU RWKHUZZLVH

7KH SURGXFW OLVWHG KHUHLQ LV GHVQLHQRWROR FEHTXVLSBHZLWKRUR UGHLYLDFHVVWIDQG
HTXLSPHQW RU GHYLFHV ZKLFK UHTGLW KHKEPDKO OXQYFVGRQURHHOZLMDL QIRVODXQFKU DXP
PHGLFDO LQVWUXPHRQW VITWLSDFHGSVR UDIHURV SOXFHO FD EKWLD D FWRLO FRQDQGRBODHUM U V
GHYLFHV <DQJMLH RU DQ\RQH RQ LWVQEMWK DQJ ODVEXLPHLWQRU W HDOSRQDREBJKVHUV
RI VDOH

7KLV SXEOLFDWLRQISVOSFHUWIDGIDVLQURQJPDVLSRQLSGBHYRURXDGGLWLRQDO LQWRHUPDWLR
KWWS ZZZ \DQJMLH FRP RU FRQDQGW RRLUFHQHFDUHXUWWDHJQJMLVWDQFH